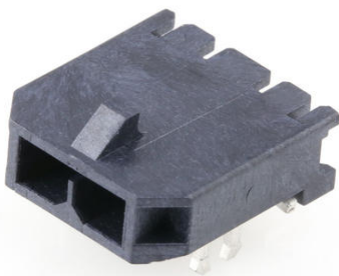




Part Number : [2189890210](#)
Product Description : Micro-Fit+ Right-Angle Header, Surface Mount, 3.00mm Pitch, Single Row, 2 Circuits, 1.50µm Matte Tin (Sn) Plating, Glow-Wire Capable, Press Clip, Black, Tape and Reel
Series Number : 218989
Status : Active
Product Category : PCB Headers and Receptacles



Documents and Resources

Drawings

- [2189890210 sd.pdf](#)
- [2189890001-PK-000.pdf](#)

3D Models and Design Files


- [STEP AP242](#)
- [SOLIDWORKS](#)
- [Creo](#)
- [Symbol and Footprint \(Multi-Format\)](#)

Specifications

- [2064600001-AS-000.pdf](#)
- [2064600000-PS-000.pdf](#)
- [2064600000-TS-000.pdf](#)
- [2064600001-TS-000.pdf](#)

Product Environment Compliance

Compliance

GADSL/IMDS	Compliant with Exemption 44; 33
China RoHS	 per SJ/T 11365-2006
EU ELV	Not Relevant
Low-Halogen Status	Low-Halogen per IEC 61249-2-21
REACH SVHC	Not Contained per D(2025)7771-DC (04 Feb 2026)

EU RoHS	Compliant per EU 2015/863
---------	---------------------------

Compliance Statements

- EU RoHS
- REACH SVHC
- Low-Halogen

Industry Documents

- IPC 1752A Class C
- IPC 1752A Class D
- Molex Product Compliance Declaration
- IEC-62474
- chemSHERPA (xml)

Substances of Interest

- PFAS

EU RoHS Certificate of Compliance

Additional Product Compliance Information

Part Details

General

Status	Active
Category	PCB Headers and Receptacles
Series	218989
Description	Micro-Fit+ Right-Angle Header, Surface Mount, 3.00mm Pitch, Single Row, 2 Circuits, 1.50µm Matte Tin (Sn) Plating, Glow-Wire Capable, Press Clip, Black, Tape and Reel
Application	Wire-to-Board
Component Type	PCB Header
Product Name	Micro-Fit+
UPC	196823178160

Electrical

Current - Maximum per Contact	13.0A
Voltage - Maximum	600V AC (RMS)/DC

Physical

Breakaway	No
Circuits (Loaded)	2
Circuits (maximum)	2
Color - Resin	Black
Durability (mating cycles max)	25
First Mate / Last Break	No
Gender	Male
Glow-Wire Capable	Yes
Keying to Mating Part	No
Lock to Mating Part	Yes
Material - Metal	Copper Alloy
Material - Plating Mating	Matte Tin
Material - Plating Termination	Tin
Material - Resin	Liquid Crystal Polymer (LCP)
Net Weight	0.551/g
Number of Rows	1
Orientation	Right Angle
Packaging Type	Embossed Tape on Reel
PCB Retention	Yes
Pitch - Mating Interface	3.00mm
Pitch - Termination Interface	3.00mm
Plating min - Mating	1.500µm
Plating min - Termination	1.500µm
Polarized to Mating Part	Yes
Polarized to PCB	Yes
Shrouded	Shrouded
Temperature Range - Operating	-40° to +125°C
Termination Interface Style	Surface Mount

Mates With / Use With

Mates with Part(s)

Description	Part Number
Micro-Fit+ Single Row Receptacle Housings	<u>215759</u>

